

## NEBNext<sup>®</sup> Ultra<sup>™</sup> II FS DNA Module

NEB #E7810S/L

24/96 reactions

Version 4.0\_7/23

### Table of Contents

Protocol .....	2
Kit Components .....	4
Revision History .....	4

### The NEBNext Ultra II FS DNA Module Includes

The volumes provided are sufficient for preparation of up to 24 reactions (NEB #E7810S) and 96 reactions (NEB #E7810L). All reagents should be stored at  $-20^{\circ}\text{C}$ . Colored bullets represent the color of the cap of the tube containing the reagent.

- (yellow) NEBNext Ultra II FS Enzyme Mix
- (yellow) NEBNext Ultra II FS Reaction Buffer
- TE Buffer (1X)

### The NEBNext Ultra II FS DNA Module is Designed for use with the Following:

NEBNext Ultra II Ligation Module (NEB #E7595)

NEBNext Ultra II Q5<sup>®</sup> Master Mix (NEB #M0544)NEBNext Singleplex or Multiplex Oligos for Illumina<sup>®</sup>

NEBNext Oligo Kit options can be found at <http://www.neb.com/oligos>.

Alternatively, customer supplied adaptor and primers can be used; please see [www.neb.com/faq-nonNEB-adaptors](http://www.neb.com/faq-nonNEB-adaptors).

**Please note: Separate instructions exist for UNIQUE DUAL INDEX UMI ADAPTORS.**

### Required Materials Not Included

- 0.2 ml thin wall PCR tubes
- PCR Machine
- Vortex
- Microcentrifuge

### Overview

The NEBNext Ultra II FS DNA Module contains the enzymes and buffers required to convert a broad range of input amounts of intact gDNA, cDNA, plasmids and some amplicons\* into fragmented DNA with 5' phosphorylated 3' dA-tailed ends. The module is optimized for use with the NEBNext Ultra II Ligation Module (NEB #E7595) and with the NEBNext Ultra II Q5 Master Mix (NEB #M0544) if amplification is required. The fast, user-friendly workflow has minimal hands-on time.

\* Fragmentation times for cDNA, plasmids and amplicons may vary from gDNA times.

**Note: The Ultra II FS Module is not compatible with bisulfite conversion workflows and FFPE DNA**

Each module component must pass rigorous quality control standards, and for each new lot the entire set of reagents is functionally validated together with NEB #E7595 and NEB #M0544 to construct indexed libraries that are sequenced on an Illumina sequencing platform.

For larger volume requirements, customized and bulk packaging is available by purchasing through OEM & Custom Solutions at NEB. Please contact [custom@neb.com](mailto:custom@neb.com) for further information.

## Protocol

### Symbols



This caution sign signifies a step in the protocol that has two paths leading to the same end point but is dependent on a user variable, like the amount of input DNA.



This is a point where you can safely stop the protocol and store the samples prior to proceeding to the next step in the protocol.



Colored bullets indicate the cap color of the reagent to be added.

**Starting Material:** 100 pg–500 ng purified, genomic DNA\*. We recommend that the DNA be in 1X TE (10 mM Tris pH 8.0, 1 mM EDTA), however, 10 mM Tris pH 7.5–8, low EDTA TE or H<sub>2</sub>O are also acceptable. If the input DNA is less than 26 µl, add TE (provided) to a final volume of 26 µl.

\* This kit can also be used for plasmids, cDNA and some amplicons. It is not recommended for use with FFPE DNA. See FAQ <https://www.neb.com/faqs/2020/10/16/is-the-nebnext-ultra-ii-fs-dna-library-prep-kit-for-illumina-compatible-with-all-sample-types>

For FFPE DNA, we recommend NEBNext Ultra II DNA Library Pre Kit for Illumina + Covaris or NEBNext FFPE DNA Library Prep Kit (NEB #E6650) or NEBNext UltraShear FFPE DNA Library Prep Kit (NEB #E6655).

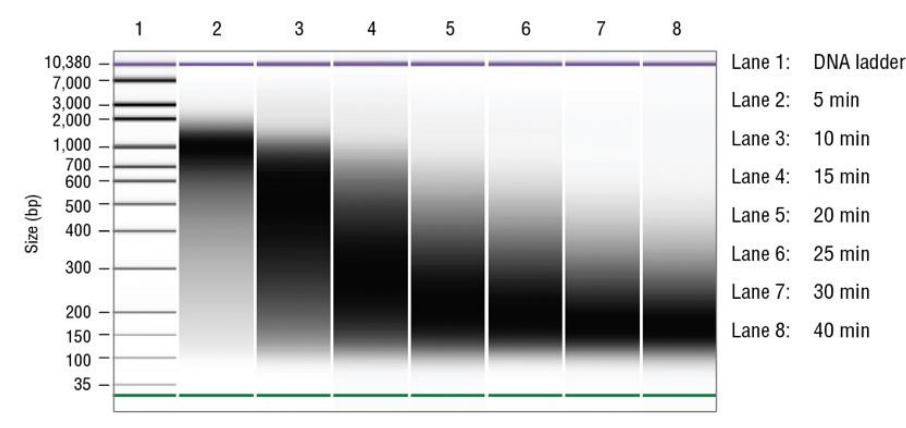
### 1.1. Fragmentation/End Prep

Fragmentation occurs during the 37°C incubation step. Use the chart below to determine the incubation time required to generate the desired fragment sizes. Incubation time may need to be optimized for individual samples. See Figure 1.1 for a typical fragmentation pattern.

FRAGMENTATION SIZE	INCUBATION @ 37°C	OPTIMIZATION
100 bp–250 bp	30 min	30–40 min
150 bp–350 bp	20 min	20–30 min
200 bp–450 bp	15 min	15–20 min
300 bp–700 bp	10 min	5–15 min
500 bp–1 kb	5 min	5–10 min

**Figure 1.1: Example of size distribution on a Bioanalyzer®.**

*Human DNA (NA19240) was fragmented for 5–40 min.*



1.1.1. Ensure that the Ultra II FS Reaction Buffer is completely thawed. If a precipitate is seen in the buffer, pipette up and down several times to break it up, and quickly vortex to mix. Place on ice until use.

1.1.2. Vortex the Ultra II FS Enzyme Mix 5-8 seconds prior to use and place on ice.

**Note: It is important to vortex the enzyme mix prior to use for optimal performance.**

1.1.3. Add the following components to a 0.2 ml thin wall PCR tube on ice:

COMPONENT	VOLUME
DNA*	26 $\mu$ l
• (yellow) NEBNext Ultra II FS Reaction Buffer	7 $\mu$ l
• (yellow) NEBNext Ultra II FS Enzyme Mix	2 $\mu$ l
<b>Total Volume</b>	<b>35 <math>\mu</math>l</b>

\* Intact gDNA, cDNA, plasmids and some amplicons

1.1.4 Vortex the reaction for 5 seconds and briefly spin in a microcentrifuge.

1.1.5. In a thermal cycler, with the heated lid set to 75°C, run the following program:

5–30 minutes @ 37°C

30 minutes @ 65°C

Hold @ 4°C



**If necessary, samples can be stored at –20°C; however, a slight loss in yield (~20%) may be observed. We recommend continuing with adaptor ligation using the NEBNext Ultra II Ligation Module (NEB #E7595) before stopping.**

## Kit Components

### NEB #E7810S Table of Components

NEB #	PRODUCT	VOLUME
E7808A	TE Buffer (1X)	1.1 ml
E7807A	NEBNext Ultra II FS Reaction Buffer	0.168 ml
E7806A	NEBNext Ultra II FS Enzyme Mix	0.048 ml

### NEB #E7810L Table of Components

NEB #	PRODUCT	VOLUME
E7808AA	TE Buffer (1X)	4.3 ml
E7807AA	NEBNext Ultra II FS Reaction Buffer	0.672 ml
E7806AA	NEBNext Ultra II FS Enzyme Mix	0.192 ml

## Revision History

REVISION #	DESCRIPTION	DATE
1.0	N/A	
2.0	New format applied	4/20
3.0	Update to information about UMI adaptors	2/23
4.0	Updated information on UMI adaptors. Also updated table styling and legal footnote.	7/23

This product is intended for research purposes only. This product is not intended to be used for therapeutic or diagnostic purposes in humans or animals.

Products and content are covered by one or more patents, trademarks and/or copyrights owned or controlled by New England Biolabs, Inc (NEB). The use of trademark symbols does not necessarily indicate that the name is trademarked in the country where it is being read; it indicates where the content was originally developed. See [www.neb.com/trademarks](http://www.neb.com/trademarks). The use of these products may require you to obtain additional third-party intellectual property rights for certain applications. For more information, please email [busdev@neb.com](mailto:busdev@neb.com).

B CORPORATION® is a registered trademark of B Lab IP, LLC, Inc.

BIOANALYZER® is a registered trademark of Agilent Technologies, Inc.

ILLUMINA® is a registered trademark of Illumina, Inc.

© Copyright 2023, New England Biolabs, Inc.; all rights reserved



be INSPIRED  
drive DISCOVERY  
stay GENUINE